

POSTED 6-27-'04

This manual is for reference and historical purposes, all rights reserved.

This page is copyright © by M. Butkus, NJ.

This page may not be sold or distributed without the expressed permission of the producer

I have no connection with any camera company

On-line camera manual library

This is the full text and images from the manual. This may take 3 full minutes for this PDF document to download.

The main page is located at www.butkus.org/chinon

If you find this manual useful, how about a donation of \$3 to: M. Butkus, 29 Lake Ave., High Bridge, NJ 08829-1701 and send your e-mail address so I can thank you. Most other places would charge you \$7.50 for a electronic copy or \$18.00 for a hard to read Xerox copy.

This will allow me to continue to buy new manuals and pay their shipping costs.

It'll make you feel better, won't it?

If you use Pay Pal or wish to use your credit card, use the Pay Pal Link on my page.

If you found this page from any other location (other then a link)
please notify me at mike@butkus.org

HOW TO USE THE ANSCO REDIFLEX CAMERA



Taken from www.butkus.org/chinon



**Your Ansco Rediflex takes 12
pictures this size ($2\frac{1}{4}$ x $2\frac{1}{4}$)
on Ansco 620 Size Film.**

YOURS WAS A WISE CHOICE!

Your Ansco Rediflex Camera is a modern, compact, reflex-type camera designed to take good pictures under any lighting conditions. The inexpensive Anscoflash Type I—sold separately—quickly converts the camera into a synchronized flash camera, making indoor photography as easy as outdoor picture-taking.

This sturdily-constructed camera, made from durable polystyrene, a stout plastic material, is engineered to give you the best possible pictures with the least effort. Its pleasing design and smart lines will blend well with any costume, any scene. Carry your Ansco Rediflex Camera wherever you go—the beach, the mountains, to school, to dances and parties, around the home. It takes pictures everywhere!

A VARIETY OF ANSCO FILM is available for your Ansco Rediflex Camera.

- **PLENACHROME** is recommended for all-around daytime use under average conditions.
- **SUPREME** is the ideal film for pictures when enlargements from the negative are required.

- **SUPERPAN PRESS** has exceptional speed and is particularly recommended when the light is extremely unfavorable.

On all of these films your Rediflex takes 12 pictures $2\frac{1}{4} \times 2\frac{1}{4}$ inches on Ansco 620 Size Film.

YOUR REDIFLEX IS SO EASY TO USE—You don't need to be an expert photographer to get good pictures with your Rediflex, but you should read the following instructions carefully. Then, if you'd like more complete details on picture-taking, read "Better Photography Made Easy," a very helpful 60-page booklet published by Ansco and sold by most photographic dealers at \$.25 per copy. Ansco also maintains a special department to answer your inquiries and furnish expert advice on your photographic problems. Just address—Ansco, Customer Service Department, Binghamton, N. Y. No charge—it's free!

LET'S LOAD YOUR REDIFLEX—In loading your Ansco Rediflex use Ansco 620 Size Film. But before you begin, look at Figure 1 and with your Rediflex before you, identify each part.

Then, go to a shady spot (if out-of-doors) or a dark part of the room (if indoors) while you put film in your camera.

VIEWING HOOD

**SOCKETS FOR ATTACHING
FLASH UNITS**

VIEWING LENS

SHUTTER RELEASE

TAKING LENS

TIME LEVER

"B" for Bulb Exposures

"I" for Instantaneous Exposures



HOOD RELEASE CATCH

**RELEASE TO OPEN
BACK OF CAMERA**

FILM WINDING KNOB

EXPOSURE WINDOW



Taken from www.butkus.org/chinon



FIGURE 2

NOW FOLLOW THESE STEPS:

1. OPEN THE BACK OF THE CAMERA by pushing the release button, (Figure 1) just below the hood release catch, to the right—as indicated by the arrow—and pulling outward on the back. Be sure that the empty film spool is in the top compartment.

2. SWING UP THE SPOOL CARRIER from the lower or empty chamber. Holding the two ends of this carrier slightly apart, (being careful not to bend them permanently out of position), drop the fresh spool into place and make certain that the two pins set in the carrier ends are engaged in the spool end holes (Figure 2). Then swing the carrier and film down into place in the chamber,

3. THREADING THE FILM: Break the seal on the roll of film and draw the red or green paper over the metal roller (never attempt to thread the paper under the roller) and across the mouth of the cone. Be very certain that the red or green side of the paper is out and the black side faces the inside of the cone. Now thread the pointed end of the paper into the longer slot of the take-up spool. Give the winding knob two turns to bind the paper and assure its

FIGURE 3



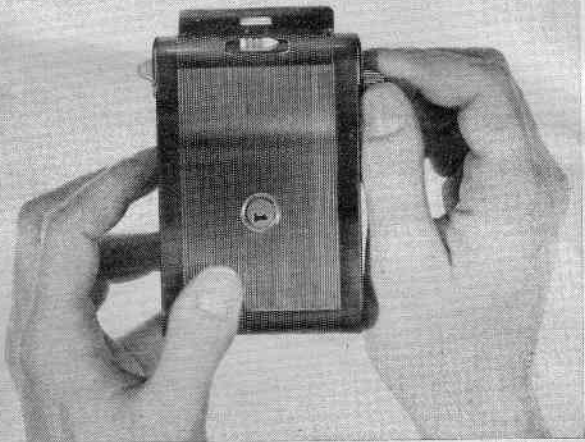


FIGURE 4

firm grip by the take-up spool, (Figure 3). Make certain that the paper is centered on the take-up spool so that it will wind evenly.

4. CLOSE THE BACK OF THE CAMERA and turn the winding knob until the figure 1 appears in the red window in the back of the camera (Figure 4). A pointing hand and 4 dots in succession will be seen just before the figure 1 appears in place. Your camera is ready for the first exposure.

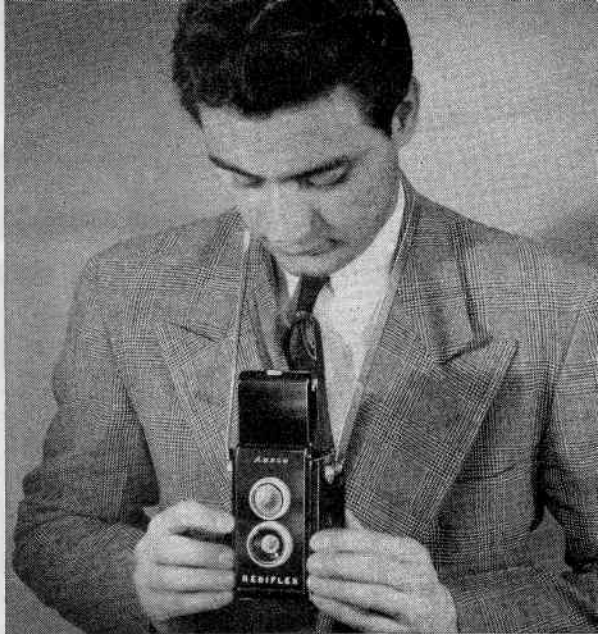


FIGURE 5

NOW YOU CAN MAKE A SNAPSHOT

To make a snapshot exposure, first be sure that the time lever (Figure 1) is in the "I" (Instantaneous) position. Hold the camera as shown in Figure 5, select your subject in the viewfinder

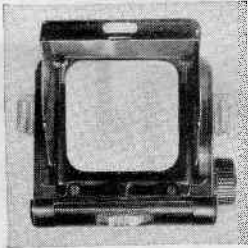


FIGURE 6

(Figure 6) and press firmly down on the red shutter release (Figure 1). When taking snapshots, a single downward pressure on the shutter release operates the shutter, opening and closing it. Don't

jerk the shutter release for this will move your camera and result in a blurred picture. Hold your breath for an instant when pushing down on the shutter release. Immediately after taking the first picture, wind again until the Figure 2 appears in the red window.

OUTDOOR SNAPSHOTS should be made with the sunlight coming from behind you (front lighting). A better position is to place your subject so that the sun's rays fall across the face from over your left or right shoulder. This gives your picture side lighting—it eliminates heavy shadows, especially around the eyes, often present in front lighting.

FOCUSING

The Rediflex Camera requires no focusing. Its fixed focus lens photographs all objects from 8 feet to infinity (as far as you can see) sharply and clearly. In order to take close-ups, a portrait attachment can be obtained from your photographic dealer. This special attachment will enable you to make head and shoulder portraits at a distance of $3\frac{1}{2}$ feet from the subject.

UNLOADING

After the twelfth, or last exposure, continue to turn the winding knob until the red or green paper is completely wound off onto the take-up spool, and you can no longer see the paper through the red window. Now open the back of the camera, pull out the swing loading bracket (Figure 2) and remove the roll of exposed film.

Fold under the pointed end of the red or green paper and seal the spool with the "Exposed" sticker. The film is now ready to be developed and printed.

To prepare the camera for the next roll of film, move the empty spool to the take-up position.

MAKING BULB EXPOSURES

When the light is not bright enough to make instantaneous or snapshot pictures, as when the subject is in the shade of a tree, or on dull, cloudy days, and you do not wish to make a "flash shot," you may want to make a bulb exposure.

1. To make bulb exposures, hold the camera on a firm support, a chair, table or other steady object. It is very important that neither the camera nor the subject move during the exposure as this will cause a blurred picture.

2. To take the picture, put the time lever (Figure 1) in the "B" or Bulb position and press the shutter release down gently, holding it down for the length of the exposure. The shutter remains open as long as the lever is held down and closes when the lever is released.

3. Bulb exposures longer than one second are seldom necessary outdoors even in extremely dull weather. Bulb exposures made indoors by daylight range from five seconds to two minutes in length, depending upon the brilliance of light outside and the number of windows in the room.

MAKING FLASH SHOTS

1. To make synchronized flash exposures with your Rediflex Camera, you must first purchase an Anscoflash Type 1 (JN 174), a roll of Ansco 620 Size SUPREME or SUPERPAN PRESS FILM, two fresh, penlight-size batteries and as many bayonet base flash lamps as you need. Consult the exposure table for the size of lamps recommended for Ansco Films. The flash unit may be purchased from your local dealer.

IMPORTANT

Make sure that the batteries are fresh. Fresh batteries will last for about one hundred exposures but lose their strength with age; three months is the average life of a battery when used for flash work.

2. The Anscoflash Type I (JN 174) as sold, is ready for use with the Ansco Pioneer Camera. To use it with the Rediflex Camera, first remove the screw and clamp from the bottom of the unit and insert the stud, (which is enclosed in an envelope inside the battery compartment) into the same screw hole.

3. Raise the metal back of the flash unit by lifting up on the side clamps and place the new

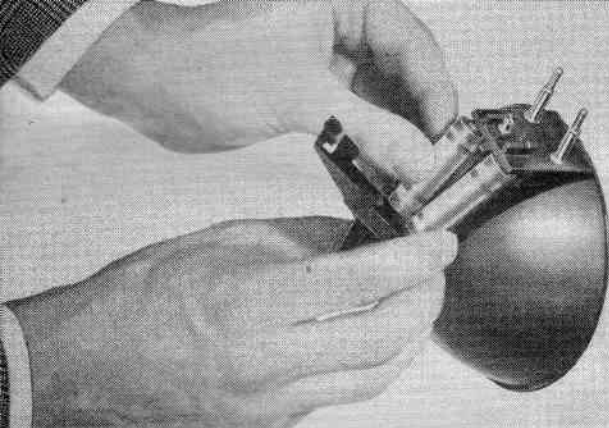


FIGURE 7

batteries inside the compartment (Figure 7). Make sure that the top and bottom of the batteries and all contact points in the battery box are clean and that the batteries are in series—ONE TIP UP AND ONE TIP DOWN—as indicated in the battery compartment.

4. Close the metal back and attach the flash unit to your camera by inserting the prongs into the holes on the side of the camera. (Figure 8). If necessary to assure snug fit, slightly spread

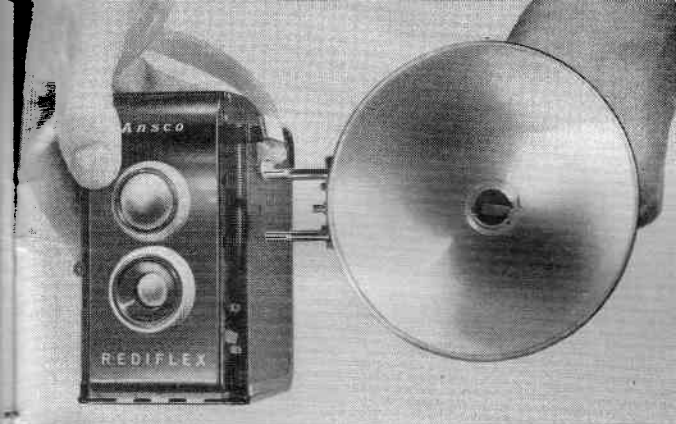


FIGURE 8

the notch in each prong of the flash unit. Now, operate the shutter several times before loading the camera with film and inserting a flash bulb. This assures clean contact points and smoother operation of the shutter.

5. Next, insert a bayonet-type flash lamp into the flash unit and line up the two protruding pins on the base of the lamp with the socket slots of the flash unit. Then push the bulb into the socket without turning—until a click is heard, indicating

that the bulb is securely in place. Do not insert a flash lamp into the socket except when the flash unit is attached to the camera.

6. To make a flash picture, hold the camera as shown in Figure 9. Make sure that the time lever (Figure 1) is in the "I" or Instantaneous position. Now select your subject in the viewfinder (Figure 6) and press firmly down on the red shutter release (Figure 1). This opens the shutter and flashes the lamp.

7. After an exposure, the lamp is easily removed by squeezing the lamp release lever on the side of the flash unit. The contact spring actually throws the lamp out, making it unnecessary to touch the hot lamp with your fingers.

When removing the Anscoflash Type I from the camera, do not twist or pull out the flash unit by forcing either of the prongs, as they may bend and cause a poor contact condition or snap off the battery housing. Also, when not using the flash unit over a period of time, remove the batteries to prevent corrosion.

FLASH SHOTS OUTDOORS

Excellent pictures can be obtained by making flash shots out-of-doors with your Ansco Rediflex



FIGURE 9

equipped with the Anscoflash Type I. All you do is take an ordinary snapshot with the flash unit attached to your camera. The extra light from the flash bulb lightens up the shadows in your subject's face or the background.

EXPOSURE GUIDE

Use Photoflash No. 5 Bulb or Superflash Press 25 Bulb

Type of Film	Distance From Your Camera To Subject
Superpan Press	16 to 25 feet
Supreme	12 to 16 feet
Plenachrome	8 to 12 feet

Note: SM-bulb is not recommended for use with this camera.

YOU'LL WANT TO PROTECT YOUR REDIFLEX with a sturdy, easy-to-use, eveready carrying case. Superbly tailored, the Ansco Rediflex Eveready Case protects your camera from dirt and damage. It is furnished in both synthetic and genuine leather.

You get better pictures with Ansco Films—ask for the film in the blue and red carton.

PLENACHROME—The orthochromatic film for outdoor pictures in sunshine or shower.

SUPREME—For outdoor pictures and indoor pictures. An ideal panchromatic film for making photographs which are to be enlarged.

SUPERPAN PRESS—Ansco's fastest panchromatic roll film for all those difficult-to-get outdoor and indoor shots.